

EXPLOR RESOURCES INC.

**15 Gamble Street East - Suite 204 - Rouyn-Noranda (Canada) J9X 3B6
TSX Venture Listing: EXS**

EXPLOR STARTS DRILLING KIDD TOWNSHIP PROPERTY

Rouyn-Noranda, Canada, February 08, 2011 - Explor Resources Inc. is pleased to announce the start of a 4000 meter Diamond Drilling Program on its 100% owned Kidd Township Property. Explor will be focusing on a 500 hectare portion of ground located approximately 2.0 kilometers east of the Kidd Creek open pit. The property is located in the Kidd Township in the Porcupine Mining division, district of Cochrane, Province of Ontario.

The Kidd Township Property is located in the south central part of Kidd Township to the West, south-west and north of the Kidd Creek mine site. The property is approximately 20 km north of the city of Timmins, Ontario. Excellent access is provided by Hwy 655. The claims have been acquired over the last 3 years (Feb 19, 2008, May 5, 2008 and September 10, 2009, March 24, 2010). Explor's land position in the area is 2,466 hectares. The most obvious topographical feature in the area is the Kidd Creek open pit approximately 1.6 km to the east of the property as well as a series of sand eskers and swamps. The property is located in a greenstone belt composed mainly of sequences of meta-volcanic rocks cut by faults and deformation zones that lie in a nw-se direction. Also there are many suites of mafic volcanic rocks.

A series of untested VTEM anomalies have been observed on the property. The newly acquired property is approximately 0,5 km to the west of the Chance (Zn-Pb-Ag) deposit and to the west of Kidd Creek Deposit as shown on the attached claim map. The acquired claims may be on the same synvolcanic collapsed structure as the Kidd Mine and the Chance Deposit. Some of the EM targets occur along magnetic boundaries suggestive of a rhyolite/basalt contacts. The Kidd Creek Mine located to the east of the property is known for Cu-Zn-Pb-Ag production. The Kidd Creek Mine has produced 130,000,000 tonnes of base metal ore since it started production in 1966. This acquisition was made because of Explor's belief in the cluster effect of VMS deposits. The presence of Mafic et Felsic rocks with anomalous zinc and copper make this an exploration property of merit.

Explor's exploration program is two phase. Phase I has been completed and was designed to determine structural targets via a VTEM-EM geophysical surveys on lines trending NE. An interpreted major fault traverses the claims immediately to the west of the Kidd Creek open Pit. Phase II will consist of diamond drilling the identified target or targets.

Chris Dupont, President and Chief Executive Officer of Explor Resources Inc. commented: *"We are extremely excited about our upcoming drilling program on our 100% owned Kidd Township Property. VMS deposits tend to cluster in districts (or camps) and locally within districts. The average massive sulphide camp in Canada has about 9 deposits, but ranges from 4 (Manitowage) to 21 (Noranda)., however an individual deposit may consist of a number of closely associated lenses ranging from several thousand to several million tons. The largest deposits in this group may be in excess of 100 million tons (example: Kidd Creek, Bathurst No.12)"*

Explor invites investors to visit our booth #2122 at the Investor Exchange of the PDAC 2011 located in the south building of the Metro Toronto Convention Center from March 06 to March 09, 2011.

Chris Dupont P.Eng is the qualified person responsible for the information contained in this release.

About Explor Resources Inc.

Explor Resources Inc. is a Canadian-based natural resources company with mineral holdings in Ontario, Québec, Saskatchewan and New Brunswick. Explor is currently focused on exploration in the Abitibi Greenstone Belt. The belt is found in both provinces of Ontario and Québec with approximately 33% in Ontario and 67% in Québec. The Belt has produced in excess of 180,000,000 ounces of gold and 450,000,000 tonnes of cu-zn ore over the last 100 years. The Company is headquartered in Québec and was incorporated in Alberta in 1986.

Explor Resources Inc. is a public listed company trading on the TSX Venture (EXS).

This press release was prepared by Explor Resources Inc. Neither the TSX Venture Exchange Inc nor its Regulation Services Provider (as that term is defined in the Policies of the TSX Venture Exchange) has reviewed or accepts responsibility for the adequacy or accuracy of this release.

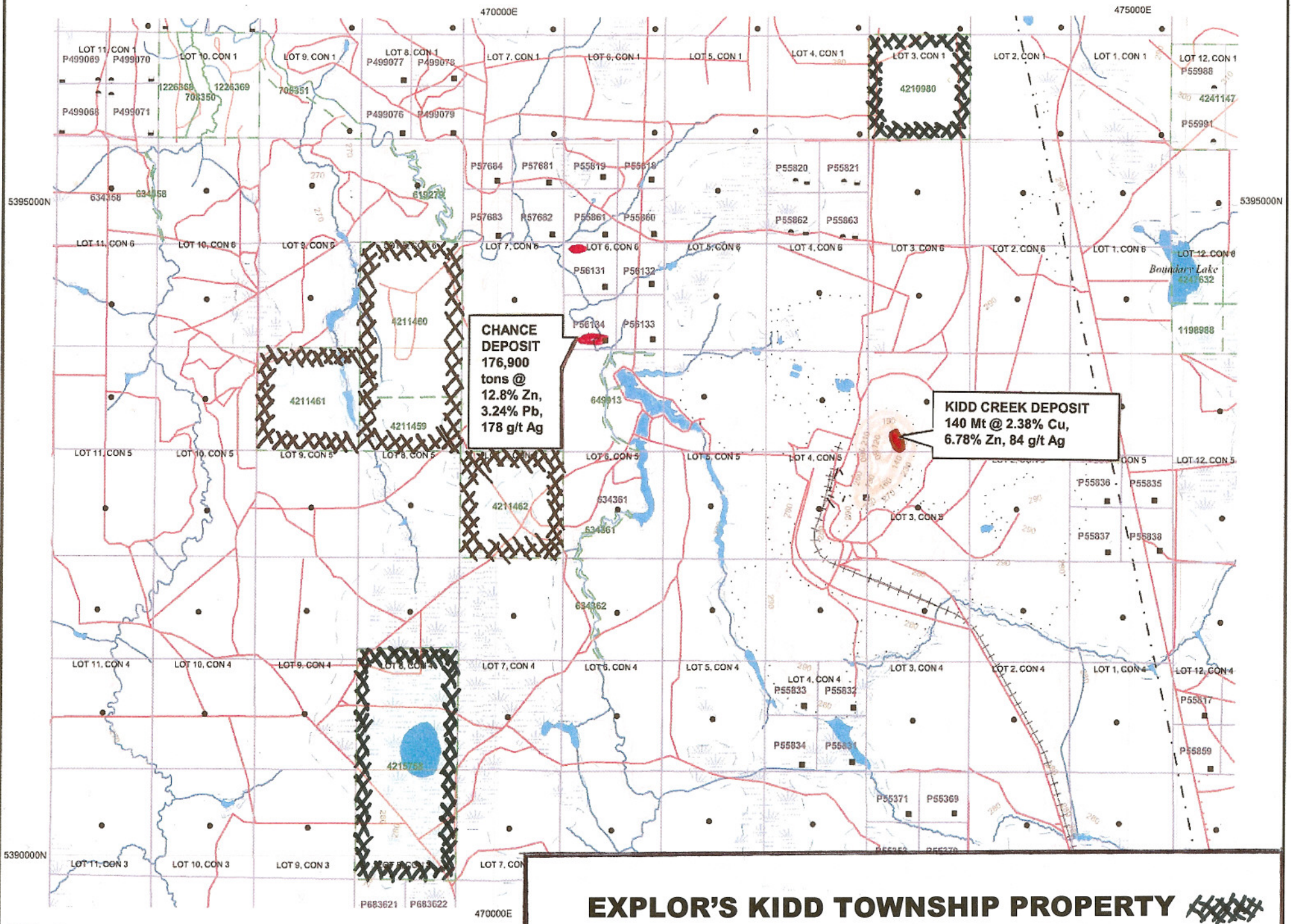
This document may contain forward-looking statements relating to Explor's operations or to the environment in which it operates. Such statements are based on operations, estimates, forecasts and projections. They are not guarantees of future performance and involve risks and uncertainties that are difficult to predict and may be beyond Explor's control. A number of important factors could cause actual outcomes and results to differ materially from those expressed in forward-looking statements, including those set forth in other public filing. In addition, such statements relate to the date on which they are made. Consequently, undue reliance should not be placed on such forward-looking statements. Explor disclaims any intention or obligation to update or revise any forward-looking statements, whether as a result of new information, future events or otherwise, save and except as may be required by applicable securities laws.

For further information please contact:

Christian Dupont, President
Tel: 888-997-4630 or 819-797-4630
Fax: 819-797-6050

Investor Relations: Gary Lindsey
Stratastar Marketing Group LLC
Tel: 720-273-6224

Website: www.explorresources.com



CHANCE DEPOSIT
 176,900
 tons @
 12.8% Zn,
 3.24% Pb,
 178 g/t Ag

KIDD CREEK DEPOSIT
 140 Mt @ 2.38% Cu,
 6.78% Zn, 84 g/t Ag

EXPLOR'S KIDD TOWNSHIP PROPERTY 

UTM Zone 17
 5000m grid